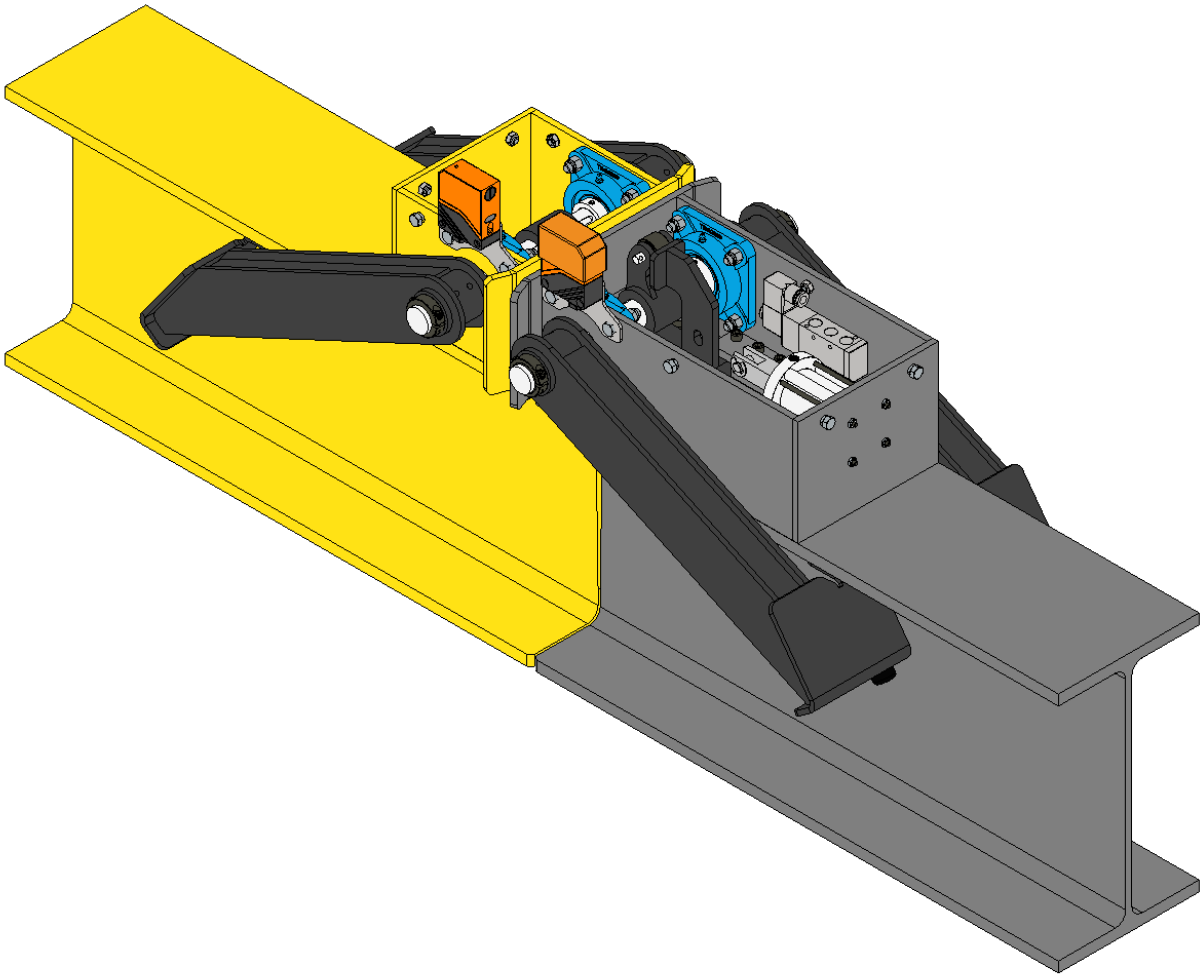


# Under Running Crane Interlock



## Installation, Operation, & Maintenance Manual



Product Design and Features ..... 2

Bridge Interlock Installation ..... 3

Extra Drawings ..... 5

Date purchased\_\_\_\_\_

SN\_\_\_\_\_

Order Number\_\_\_\_\_

Product specifications and dimensions are approximate and for informational purposes only. Variations may occur due to design or manufacturing adjustments. For exact measurements, please confirm with our customer service before ordering. PWI reserves the right to modify specifications without notice.

# Under Running Crane Interlock

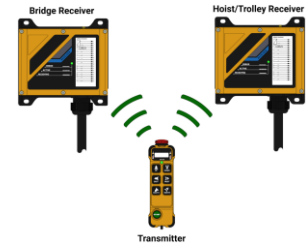


## Product Description

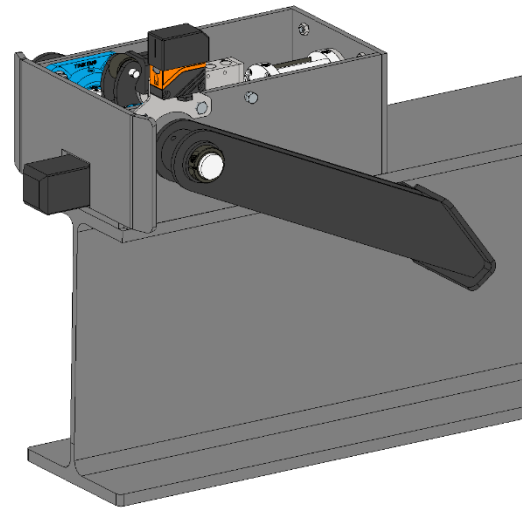
- Interlock system that allows a moving bridge to interlock with a fixed monorail section.

## Product Features

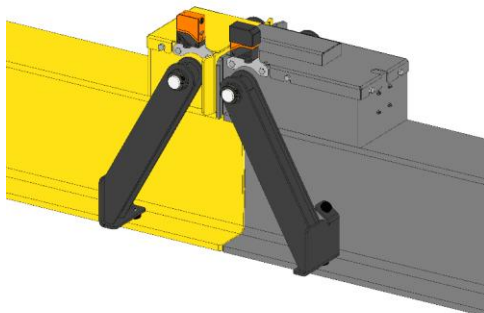
- Capacity: up to 15 ton
- For interlocking a bridge crane to a monorail or transfer zone
- Self-aligning 2" x 2" square locking pin
- Tight clearance required between bridge and monorail
- 1/8" – 1/4" Gap on bottom flange when locked
- Compatible with Starke SCU end trucks
- Radio Controlled
- No subframe required
- Pneumatic cylinder



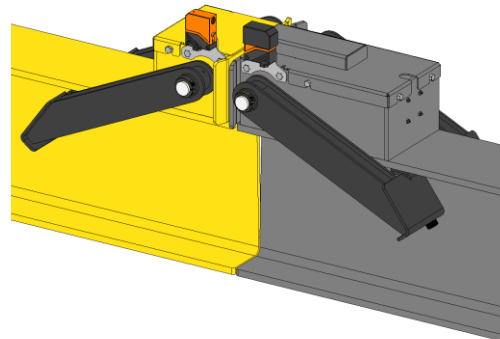
Engaged



Disengaged



Engaged



Product specifications and dimensions are approximate and for informational purposes only. Variations may occur due to design or manufacturing adjustments. For exact measurements, please confirm with our customer service before ordering. PWI reserves the right to modify specifications without notice.

# Under Running Crane Interlock



## Step 1. Bridge Interlock Installation

1. Using your drawing measurements, drill holes into the Monorail and Bridge so that each box is flush with the end of their respective beam.  
**(Image 1.1)**
2. Bolt the Monorail box onto the top of the monorail with the provided hardware as shown.  
**(Image 1.2)**
3. Bolt the Bridge box onto the top of the bridge with the provided hardware as shown.  
**(Image 1.3)**

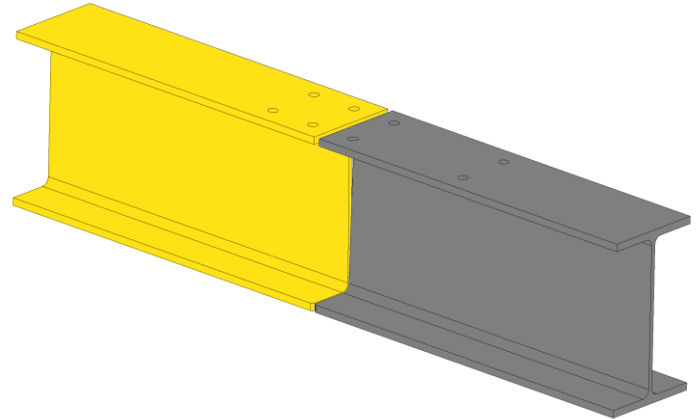


Image 1.1 Drill Holes

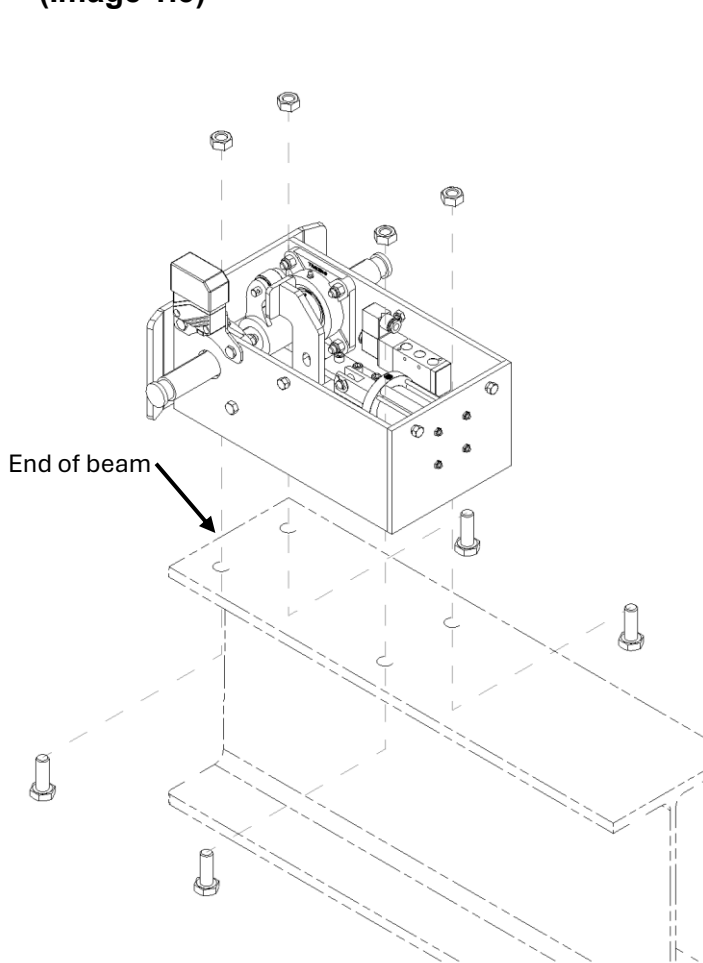


Image 1.2 Monorail Box

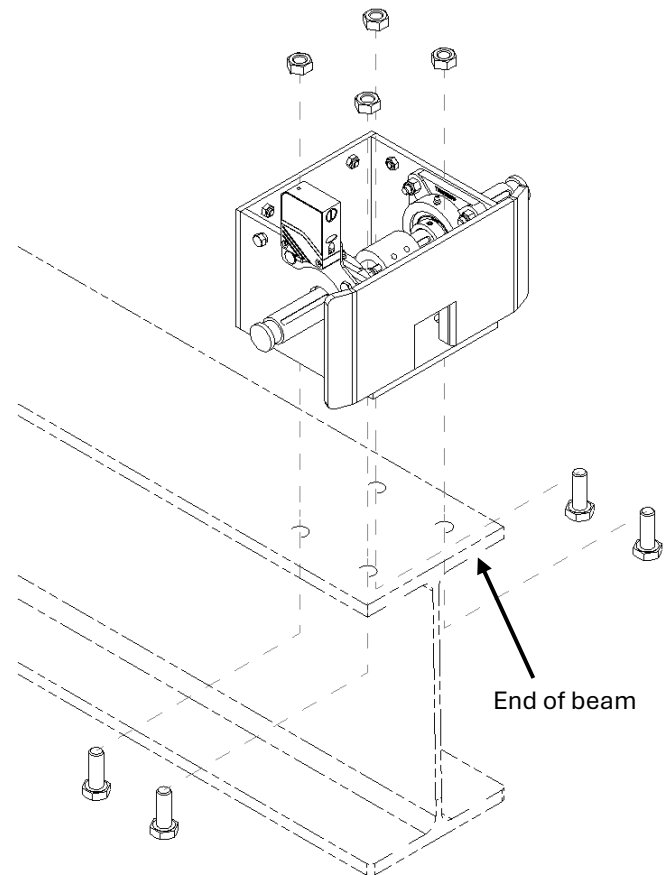


Image 1.2 Bridge Box

Product specifications and dimensions are approximate and for informational purposes only. Variations may occur due to design or manufacturing adjustments. For exact measurements, please confirm with our customer service before ordering. PWI reserves the right to modify specifications without notice.

# Under Running Crane Interlock



4. Align the Bridge and Monorail boxes to ready the interlocks for engaging. **(Image 1.4)**

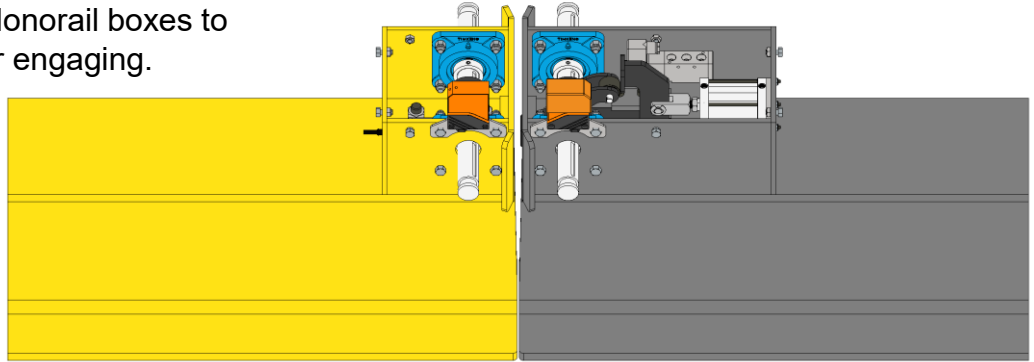


Image 1.4 Align Interlocks

5. Engage the interlocks and ensure the interlocks are fully engaged and stay engaged. **(Image 1.5)**

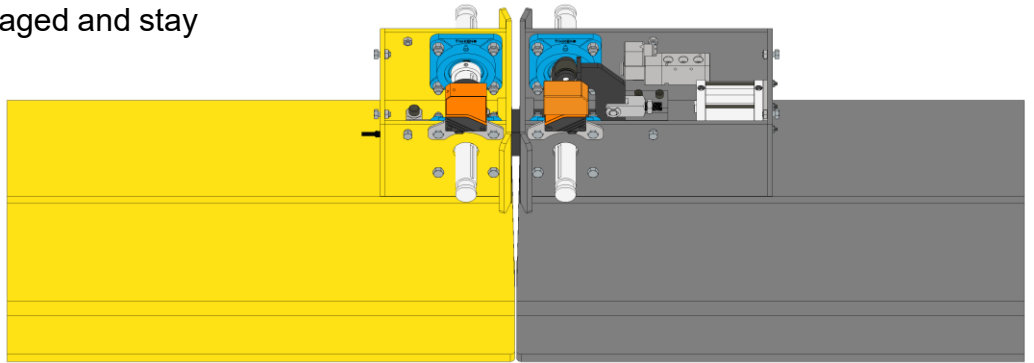


Image 1.5 Engage Interlocks

6. Insert the legs on each axle on either side, lift the legs to the **ENGAGED POSITION**, insert and tighten the set screws provided in their respective holes. **MAKE SURE THE LEGS ARE FULLY LIFTED WHILE TIGHTENING.** (Images 1.6A & 1.6B)

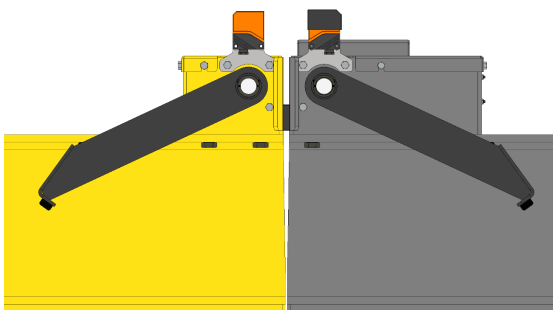


Image 1.6A Engaged Position

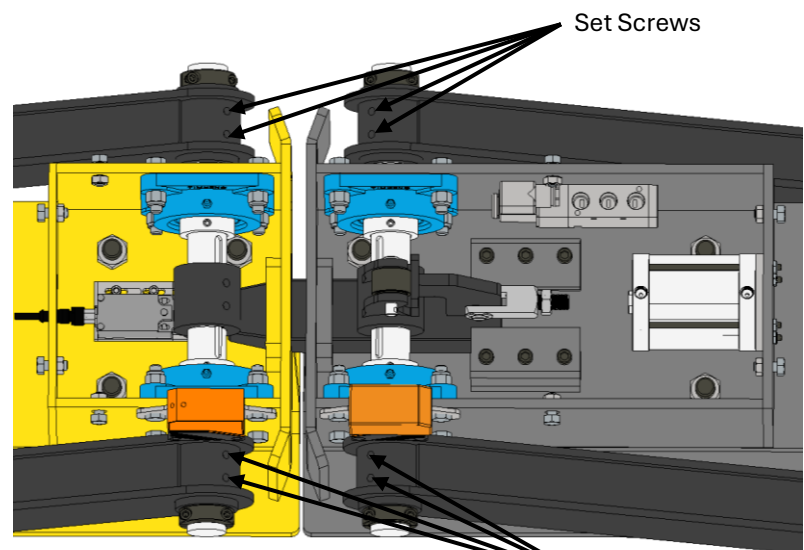


Image 1.6B Insert Set Screws

Set Screws

Set Screws

Product specifications and dimensions are approximate and for informational purposes only. Variations may occur due to design or manufacturing adjustments. For exact measurements, please confirm with our customer service before ordering. PWI reserves the right to modify specifications without notice.



# Under Running Crane Interlock



7. If you haven't already, insert and tighten **all four** two-piece clamps on each axle and side. (Image 1.7)

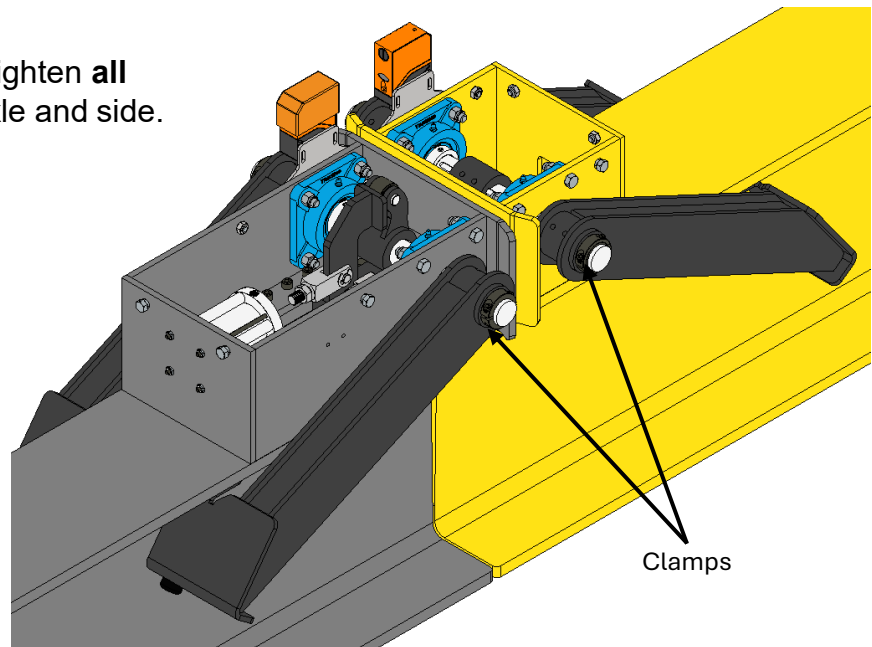


Image 1.7 Two-Piece Clamps

8. After the legs and clamps have been fully installed, disengage and engage the interlocks multiple times to test if they are working. If desired, misalign the bridge and monorail and align them again before reengaging. **Use the drawings on the following pages to ensure the disengaged and engaged positions are correct!**
9. Lastly, once everything is working and access to the components is no longer necessary, place the dust covers on their respective boxes and tighten them down with the provided hardware as shown. (Image 1.9)

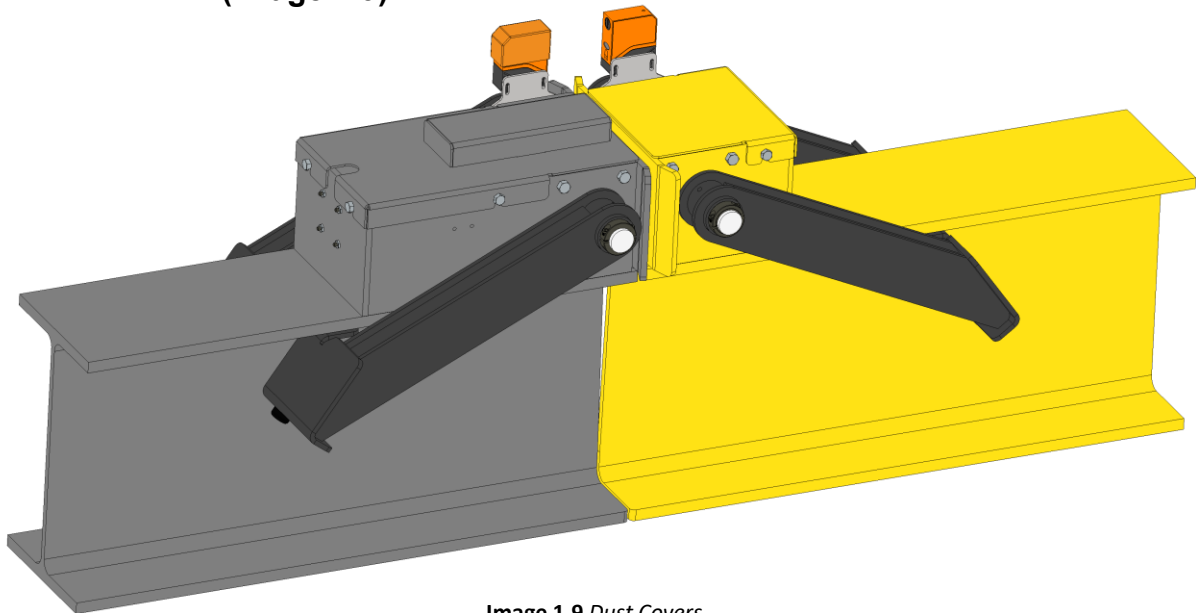


Image 1.9 Dust Covers

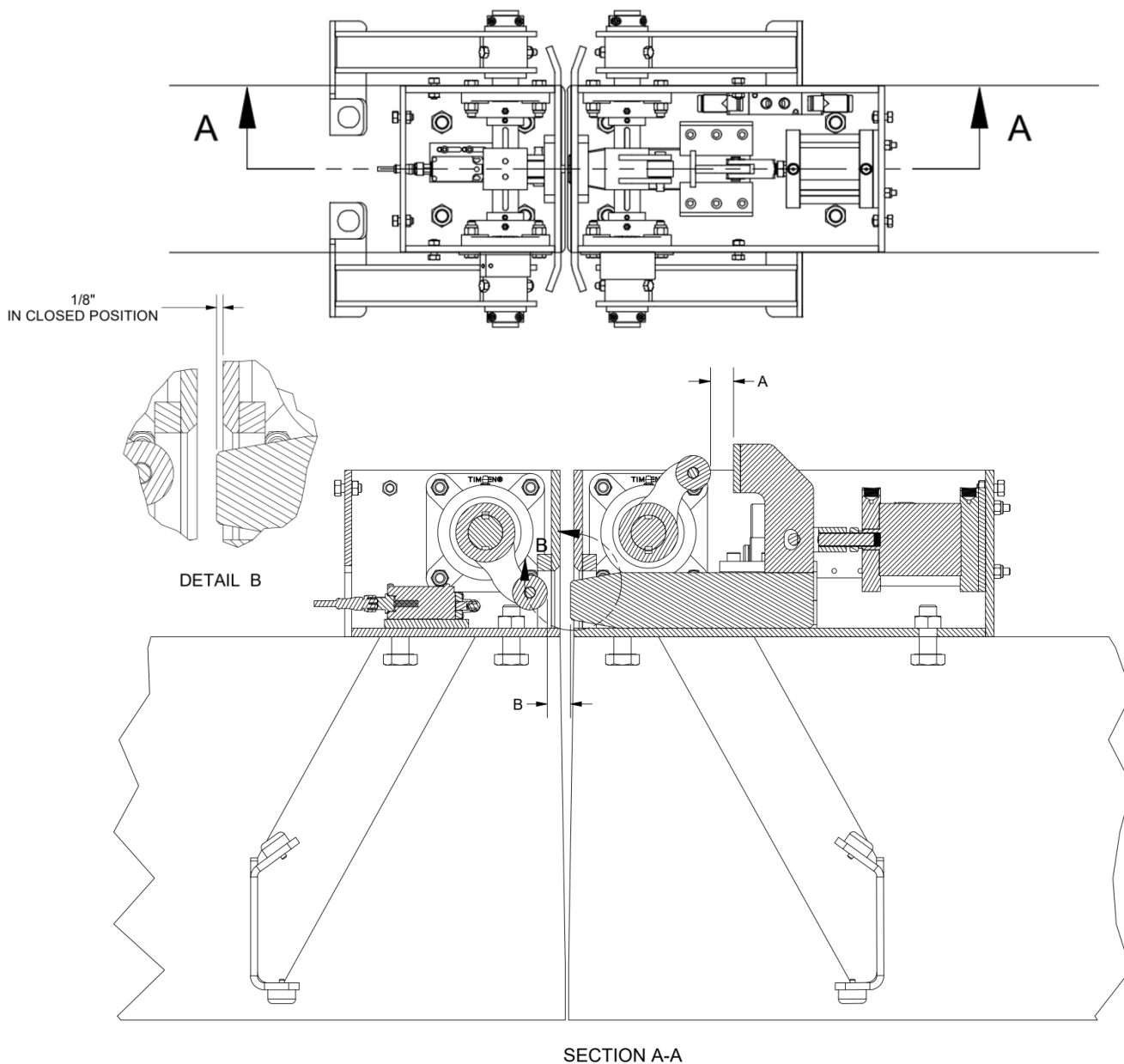
Product specifications and dimensions are approximate and for informational purposes only. Variations may occur due to design or manufacturing adjustments. For exact measurements, please confirm with our customer service before ordering. PWI reserves the right to modify specifications without notice.



# Under Running Crane Interlock



8. Dimension A and dimension B should be the same when in the closed position.
9. Drill shaft holes while in closed position.



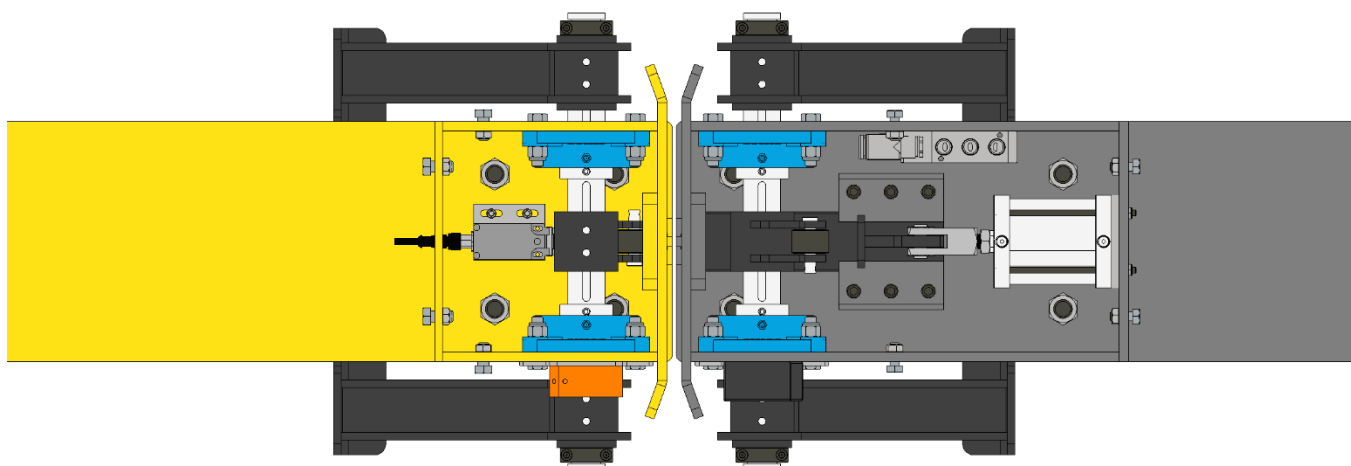
Product specifications and dimensions are approximate and for informational purposes only. Variations may occur due to design or manufacturing adjustments. For exact measurements, please confirm with our customer service before ordering. PWI reserves the right to modify specifications without notice.

# Under Running Crane Interlock

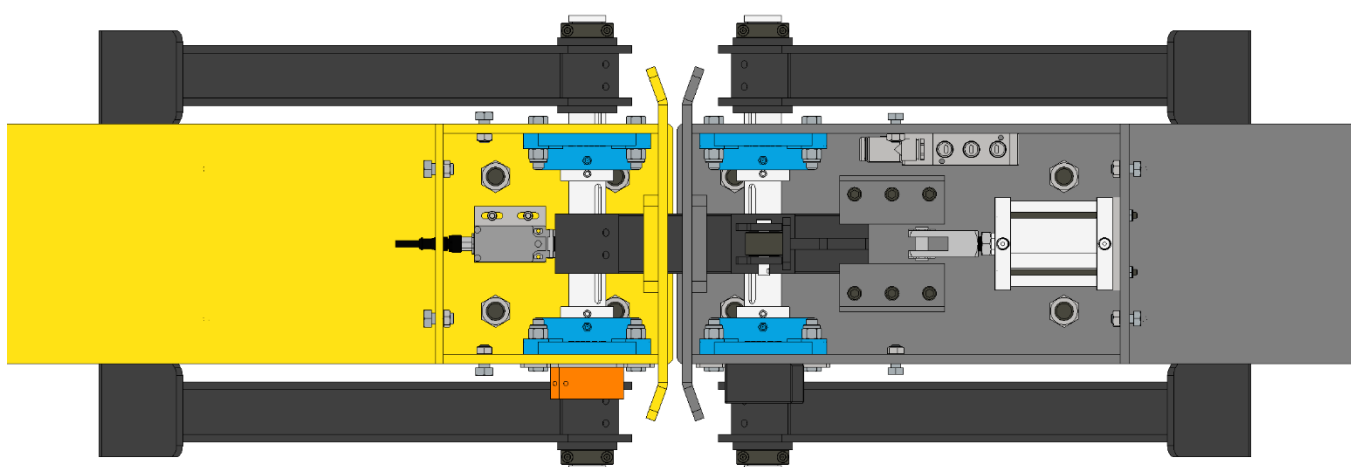
---



Disengaged



Engaged



---

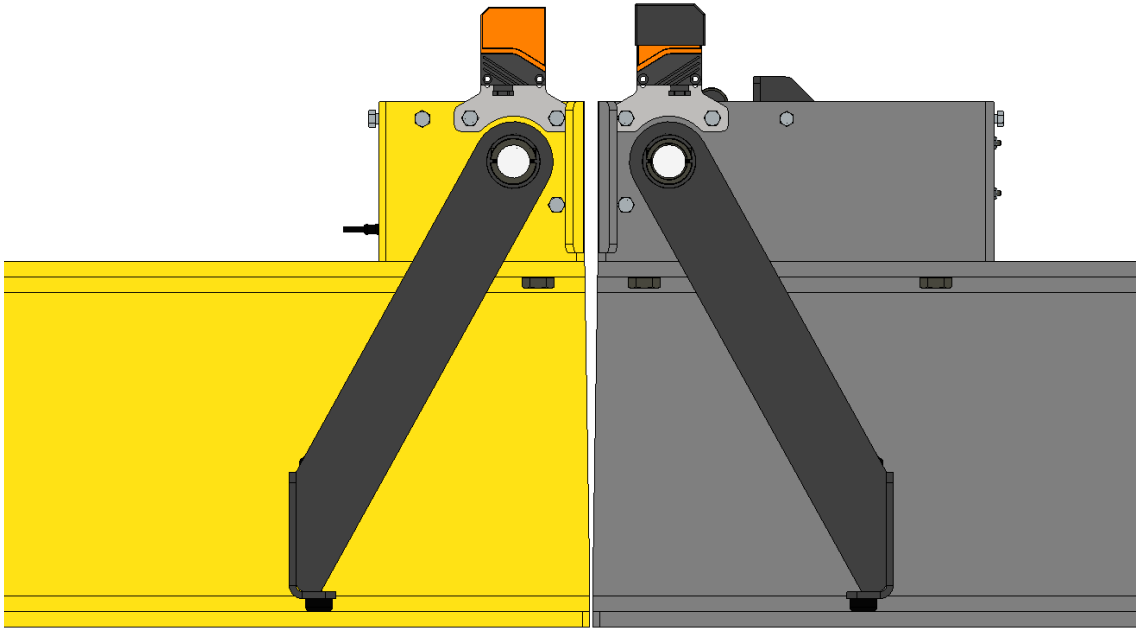
Product specifications and dimensions are approximate and for informational purposes only. Variations may occur due to design or manufacturing adjustments. For exact measurements, please confirm with our customer service before ordering. PWI reserves the right to modify specifications without notice.

# Under Running Crane Interlock

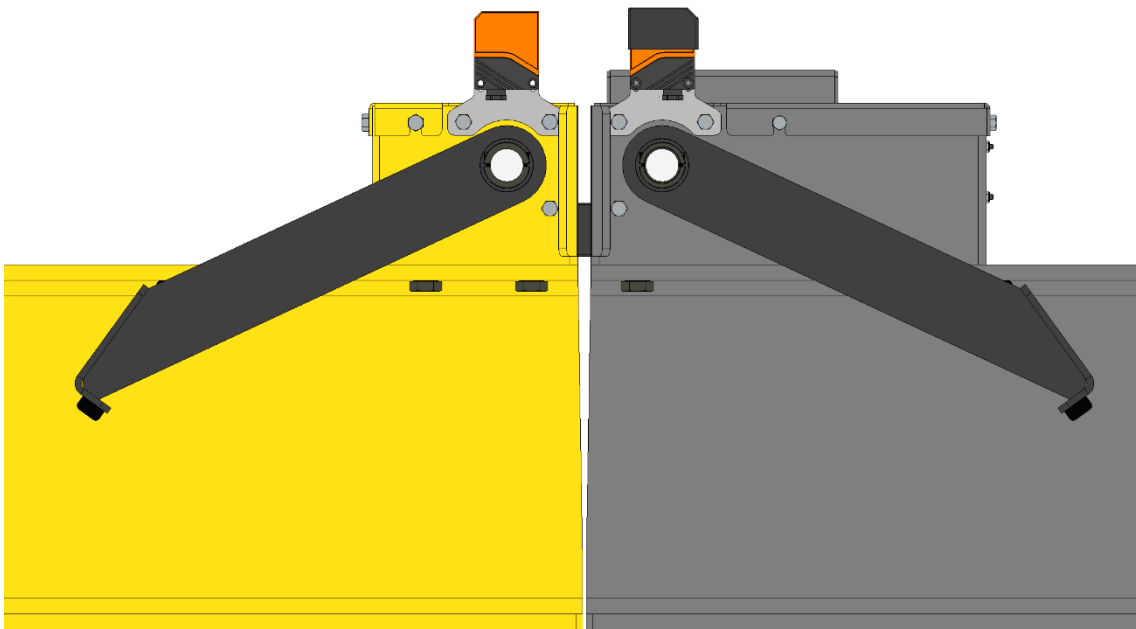
---



Disengaged



Engaged



---

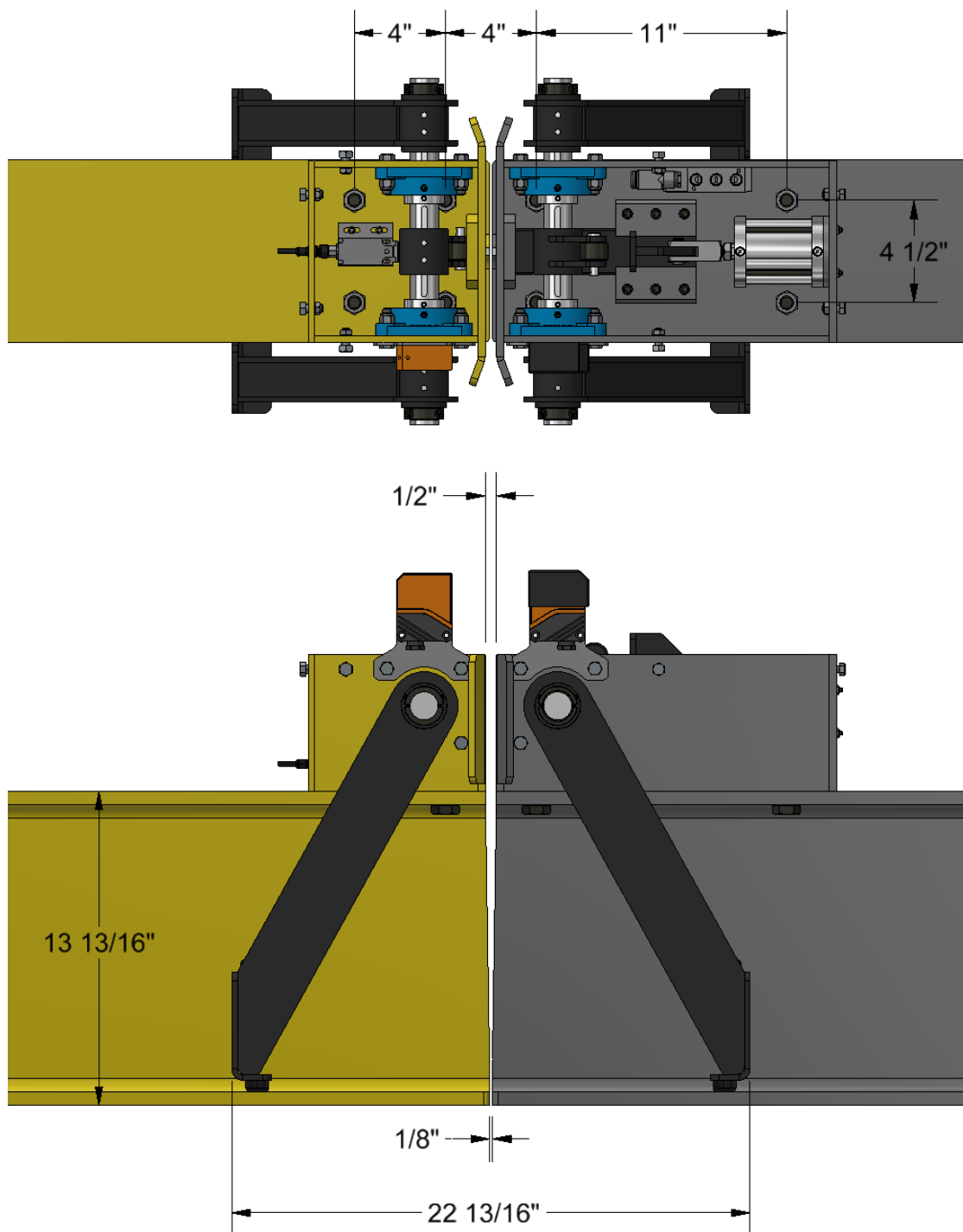
Product specifications and dimensions are approximate and for informational purposes only. Variations may occur due to design or manufacturing adjustments. For exact measurements, please confirm with our customer service before ordering. PWI reserves the right to modify specifications without notice.



# Under Running Crane Interlock



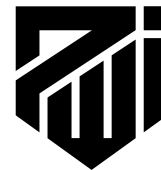
## Disengaged



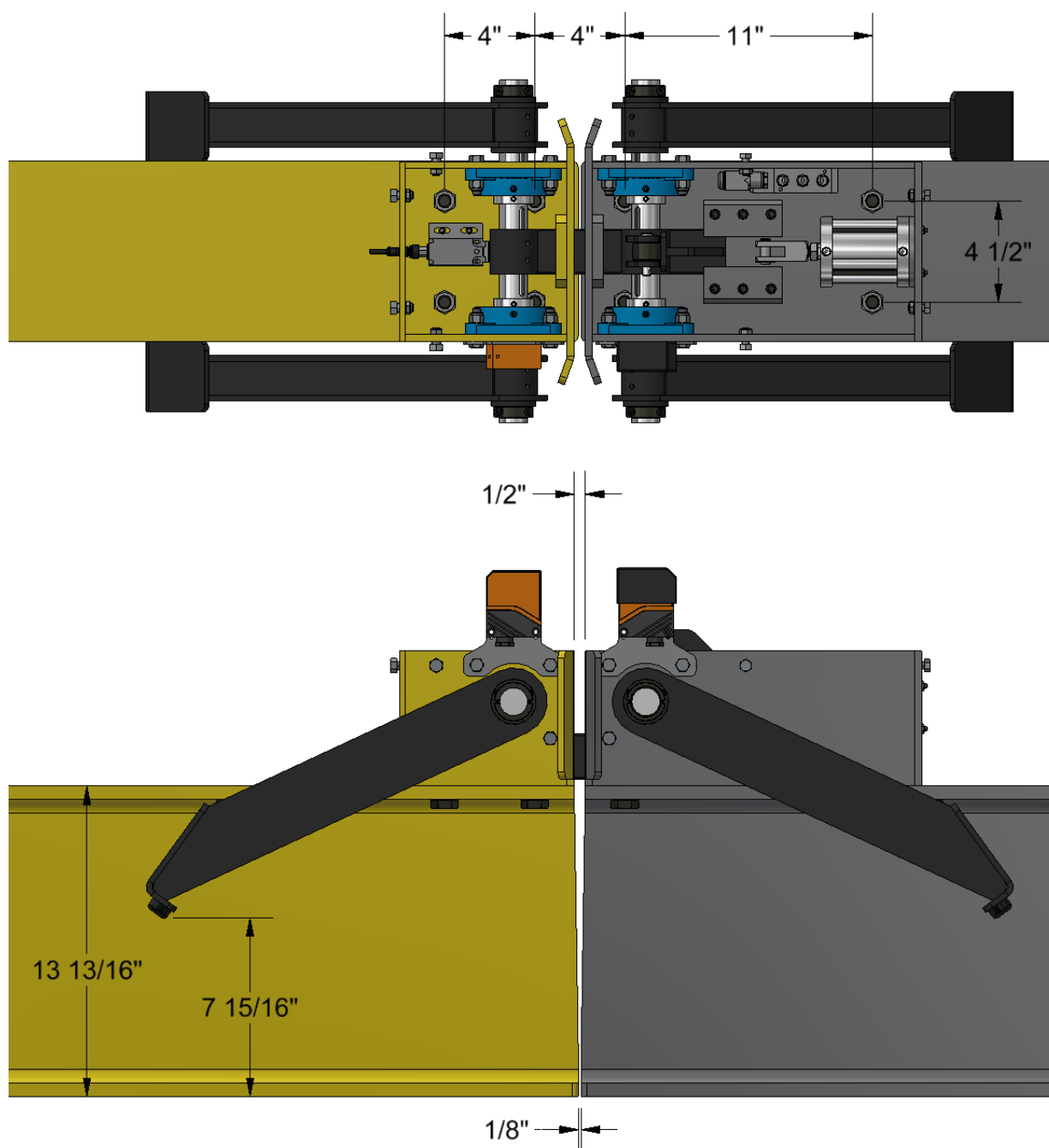
Product specifications and dimensions are approximate and for informational purposes only. Variations may occur due to design or manufacturing adjustments. For exact measurements, please confirm with our customer service before ordering. PWI reserves the right to modify specifications without notice.



# Under Running Crane Interlock



Engaged



Product specifications and dimensions are approximate and for informational purposes only. Variations may occur due to design or manufacturing adjustments. For exact measurements, please confirm with our customer service before ordering. PWI reserves the right to modify specifications without notice.

