



OWNER'S MANUAL

SSP Series- 115V Electric Chain Hoists

Models

SSP-1026	½ Ton
SSP-2022	1 Ton
SSP-4011	2 Ton



Table of Contents

1.0 Important Safety Information	4
1.1 Safety Precautions	4
1.2 Warnings	4
2.0 Product Specifications.....	5
3.0 Hoist Service Life Ratings	6
3.1 What does the FEM Hoist Duty Service Classification Mean?	6
3.2 Load Spectrum	7
3.2.1 Light Use.....	7
3.2.2 Medium Use.....	7
3.2.3 Heavy Use	7
4.0 Lifting Motor Usage Data.....	8
4.0.1 ED%	8
5.0 Safety Features.....	9
6.0 Pendant Options	10
7.0 Basic Electrical and Chain Information	11
8.0 Mechanical Drawings & Data	12
8.1 Dimensional Drawing.....	12
9.0 Safety Tips for Overhead Crane Operation	13
10.0 Installation.....	14
10.1 Unpacking	14
10.2 Power Requirements	14
10.3 Upper hook assembly	14
10.4 Chain Bag	14
10.5 Electrical Connection	14
10.6 Operational Testing.....	15
11.0 Operation	16
12.0 Maintenance	16
12.1 General Maintenance	16

12.2 Daily Pre-Use Inspection (No Load).....	17
12.3 Monthly Inspection.....	17
12.2.3 Annual Overhaul	18
13.0 Electrical Information.....	19
13.1 Starke Single Speed 115V Hoist Motor Horsepower & Amp Information.....	21
14.0 Parts Orders.....	21
15.0 Part Lists and Exploded Drawings.....	22
15.1 Motor and Body Assembly Diagram.....	22
15.2 Motor and Body Assembly Part List	23
.....	25
16.0 Troubleshooting Guide	26
17.0 Derated Hoist Information	28
Starke Products Warranty	29

1.0 Important Safety Information

Please read, understand, and follow all aspects of this manual before the assembly and installation of this hoist system. Please observe and follow all safety and warning information during the operation of this system. Failure to do so may result in serious property damage, personal injury and/or loss of life.

1.1 Safety Precautions

Because of the heavy loads being transported by this system, the operator and those around the serviceable area must be attentive to and aware of all potential risks involved with the operation of this system. The operator must pay careful attention to and abide by the safety rules and warnings listed below and found throughout this manual. All Safety Rules and Warnings must be followed.

1.2 Warnings

- Before operation, the operator must have a clear and unobstructed view of the entire service area of this system.
- For your safety do not attach the electrical supply wires to this unit before the completion of installation!
- Before operation, inspect the hoist system to be sure it is in proper working condition. Check for any possible obstacles and/or personnel in the service area of the hoist system.
- While operating the hoist system, the operator must take caution to prevent a situation where the changing of direction of travel and the resulting abrupt force may cause the load to swing. This may cause an overload of the trolley and/or hoist and loss of the load.
- Do not modify this unit in any way or operate the unit in an overloaded or damaged condition. Any attempt to do so will put you, others, and property at serious risk.
- Repairs to this unit must be performed by a qualified repair facility. Contact Starke America to locate the nearest repair facility. See warranty information at the end of this manual.

2.0 Product Specifications

Design relative humidity %: $\leq 85\%$ RH

Design Temperature Rating: -10F to 130F (Normal Operating Range)

Protection Class:

- Hoist: IP54
- Pendant: IP54
- Hoist Noise: 81 (dB)

If the working environmental conditions are outside of the recommended values in the table, please consult your dealer for further guidance.

The standard noise measurement is read at 1 meter from the hoist under normal operation.

SSP Lifting Speeds

SSP1026 - 26 FPM

SSP2022 - 22 FPM

SSP4011 - 11 FPM

Reeving

SSP1026 – Single

SSP2022 – Single

SSP4011 – Double

3.0 Hoist Service Life Ratings

The service life expectancy and safe operation of the electric chain hoist can be realized only if it is operated in accordance with the following. The European Materials Handling Federation, known as 'FEM' are a standard body for the material handling industry and are publishers of the FEM Hoist Duty Classifications.

The design of this hoist conforms to the rating

FEM- 1Am

ISO- M4

ASME- H4

3.1 What does the FEM Hoist Duty Service Classification Mean?

When the load spectrum and the average daily operating time of the hoist are identified, (using the formula below) the duty service classification of the hoist is obtained from this table. The classification is for a 10 year serviceable lifetime.

Load Spectrum	Average Daily Operating Time ISO/FEM (hours per day)					
	≤0.5	≤1	≤2	≤4	≤8	≤16
Light			M3 1Bm	M4 1Am	M5 2m	M6 3m
Medium		M3 1Bm	M4 1Am	M5 2m	M6 3m	M7 4m
Heavy	M3 1Bm	M4 1Am	M5 2m	M6 3m	M7 4m	
Very Heavy	M4 1Am	M5 2m	M6 3m	M7 4m		

Using the formula below you can calculate the average daily use in hours for your situation.

$$t = \frac{2 * H * N * T}{V * 60}$$

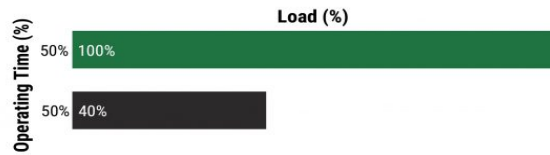
H = average hoisting height in meters
 N = the number of work cycles per hour
 T = the daily working time in hours
 V = the hoist speed (meters per minute)

3.2 Load Spectrum

The load spectrum is the magnitude of the load over the duration of the hoist's operation and the calculated daily operating time. The basis for calculations is in accordance with FEM standards that a hoist has a 10-year serviceable lifetime.

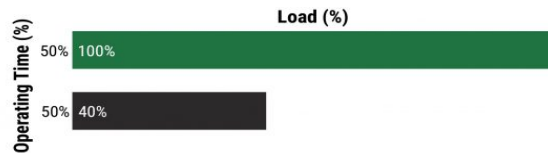
3.2.1 Light Use

Light use would be defined as occasional full loads, usually light loads and small fixed loads (typically a light duty workshop crane with single shift operation).



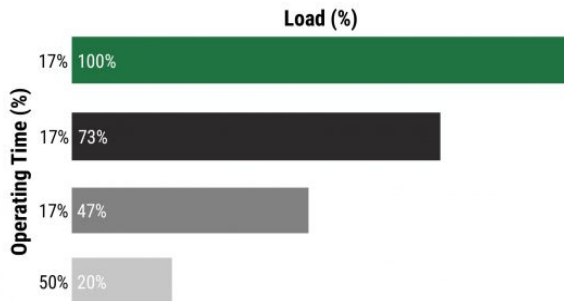
3.2.2 Medium Use

Medium use would be defined as occasional full loads, usually light loads and average fixed loads (usually a medium duty workshop crane with single shift operation).



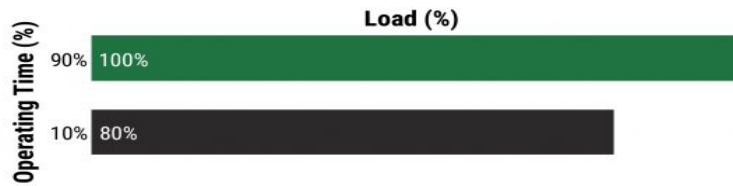
3.2.3 Heavy Use

Heavy use would be defined as repetitive full loads, usually average loads, and heavy fixed loads (expected to be a heavy-duty crane with one or to shift options).



3.2.4 Very Heavy Use

Very Heavy use would be defined as usually almost full loads and very heavy fixed loads (this would be two to three shift operations with magnets below the hooks).



4.0 Lifting Motor Usage Data

Group		Intermitted operation			Continuous Operation
F.E.M	ISO	Cycles/h	Starts/h	ED(%)	Operation cycle/min
1 DM	M1	15	90	15	7.5
1 CM	M2	20	120	20	7.5
1 BM	M3	25	250	25	15
1 AM	M4	30	180	30	15
2M	MS	40	240	40	30
3M	M6	50	300	50	30
4M	M7	60	360	60	60
SM	MS	60	360	60	>60

4.0.1 ED%

ED(%) rating, expressed as a percentage, specifies the proportion of time a motor can operate within a 10-minute period before needing a cooldown. For example: 40% ED: The motor can run for 4 minutes, followed by 6 minutes of cooling

5.0 Safety Features

5.1 Magnetic slide brakes are a unique design by which it releases when the motor stator is energized, and the magnetic field pulls the brake hub from the friction cup. When power is removed it immediately engages and halts the motor's rotation.

5.2 The hook is forged of high tensile strength steel and heat treated to ensure maximum rigidity and hardness. It is equipped with a spring-loaded safety latch for securing lifting rigging devices in place. The lower hook assembly is supported within a ball bearing structure to allow easy rotation of the load.

5.3 The control system includes high quality electrical contactors.

5.4 Upper and lower lifting limit switch is standard equipment on our Starke hoists to prevent damage to the chain and pulley system in the event of an operator error.

5.5 Control pendant options are all equipped with an emergency stop (Estop) button that is a manual reset type. This is to immediately stop all functions of the hoist system in the event of an emergency; it can also be used to secure the hoist system from unintentional activation.

6.0 Pendant Options

Pendant modes of motion are to be specified to dealer upon ordering hoist.

- a. In a fixed position installation of the hoist a 1-motion pendant would be required.
- b. If a hoist and motorized trolley is specified then a 2-motion pendant would be required.
- c. If a hoist, motorized trolley, and motorized bridge are specified then a 3-motion pendant is required.
- d. Another option is a wireless pendant control system that again can be customized to your application by your Starke America dealer.



1 Motion Pendant



2 Motion Pendant

7.0 Basic Electrical and Chain Information

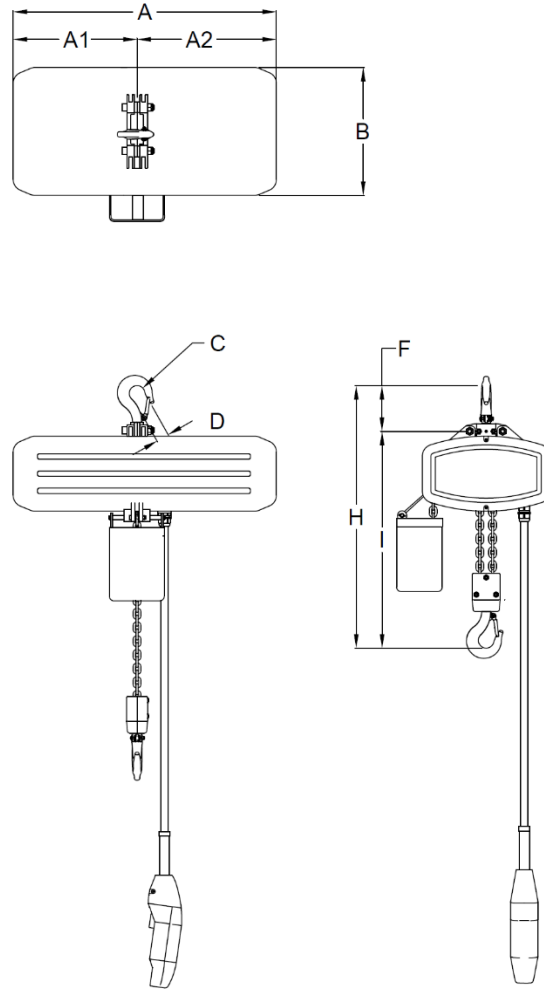
Capacity	1000 LB	2000 LB	4000 LB
Chain Dimension (mm)	6.3	8.0	8.0
Lifting Speed (FPM)	26	22	11
E.D. Rating (%) See Section 3.0	40	40	40
Control Voltage	24VAC	24VAC	24VAC
Falls	1	1	2
Circuit Requirement (Amps)	20	30	30

Load Chain

Grade 80 case hardened alloy steel chain endures harsh conditions including moisture, salt water, and some chemicals. Oil chain per recommendations in this manual.

8.0 Mechanical Drawings & Data

8.1 Dimensional Drawing



Starke Hoist (in Inches)	A	A1	A2	B	C	D	E	I
SSP-1026	20	11	9	8.5	1.5	1.25	2.62	16.25
SSP-2022	21.25	12	9.25	11	1.75	1.5	3	19.25
SSP-4011	21	12	9.25	11	2.00	1.5	5	25.5

9.0 Safety Tips for Overhead Crane Operation

- Before using, ensure the crane is suitable for the planned hoisting task. Confirm it has appropriate travel, lift, and capacity.
- Visually and physically inspect the crane before use. Check for damage, wear, and proper operation of all functions.
- Confirm the load weight. Check the capacity of all equipment including the hardware, rope, and slings. Do not exceed these capacities.
- Select the right sling for each lift. Inspect slings and other rigging hardware before use for wear, stretch, or other damage. Do not use damaged or defective slings. Use softeners around sharp corners. Do not splice broken slings.
- When communicating with a crane operator, use clear agreed-upon signals. Except for the stop signal, the crane operator should follow instructions from only one person – a designated signaler. Where a wired or remote control is used, the operator should become familiar with all of its functions before lifting the load.
- Warn all people in the load lift area before starting the lift. Ensure that the path of the load is clear of persons and obstructions. Do not lift loads over anyone. Center the crane hoist over the load before hoisting to prevent swinging of the load.
- Slide the sling fully onto the hoisting hook and ensure the safety latch is closed. Do not load the hook tip or hammer a sling into place.
- Secure unused sling legs. Do not drag slings or leave loose materials on a load being hoisted.
- Keep hands and fingers from being trapped when slack is taken out of a sling. Step away before the lift starts.
- Move the load and controls smoothly. Minimize load swing.
- Walk ahead of the load during travel and warn people to keep clear. Use a tagline to prevent rotation or other uncontrolled motion. Raise the load only as high as necessary to clear objects. Do not ride on the hook or load.
- Set loads down on blocking, never directly on a sling. Do not pull or push loads out from under the hoist.
- Do not leave the load (or the crane) unattended while the load is suspended.
- Where crane operation by other personnel must be restricted, employ lockout and tagging procedures.
- Store slings off the floor in a clean, dry location on hooks or racks. Do not leave slings, accessories, or blocking lying on the floor.

10.0 Installation

10.1 Unpacking

Upon opening the crate that the hoist is shipped in, please inspect the hoist for any signs of damage to the power cable, gearbox, and motor shell that may have occurred during shipping. You should find in the crate, the hoist, chain bag, control pendant, and the owners documentation.

10.2 Power Requirements

Please verify the power supply voltage you intend to use also matches the hoists amp requirements. Typical 15 amp wall outlets may not provide the necessary amp flow that the hoist requires. Verify your 115V outlet is rated for the amps shown below.

SSP-1026 = 110 to 120V with **20 amp circuit minimum**. 12 gauge supply wire.

SSP-2022 = 110 to 120V with **30 amp circuit minimum**. 10 gauge supply wire.

SSP-4022 = 110 to 120V with **30 amp circuit minimum**. 10 gauge supply wire.

▲IMPORTANT NOTE: Do not connect the power supply prior to completing the physical installation of the hoist system. Potential damage and/or injury may occur.

10.3 Upper hook assembly

Before installing the hoist, please confirm the entire upper hook assembly has been completely assembled and mounted to the hoist body securely. Hang the hoist to the support structure carefully and check all fasteners are secured.

▲IMPORTANT NOTE: If the hoist system is equipped with a Starke motorized trolley the hook will be omitted, and the suspension lug will be required to attach the hoist to the trolley.

10.4 Chain Bag

Install chain bag to the bottom of hoist body with the supplied hardware, note that the brackets on the chain bag are offset slightly to allow the bag to hang level.

10.5 Electrical Connection

As a precaution, please confirm the power supply voltage and wire size matches the power requirements of the hoist system. Connect the power supply and verify proper operation. See 10.2 above.

Wiring Diagrams are found in section 13.0

10.6 Operational Testing

- Test the emergency stop button on the control pendant. With the E-stop button depressed the hoist should not operate when any pendant button is activated. If any button activates hoist while E-stop is depressed, do not use the hoist and contact your dealer for further information. If all is well then grab the E-stop button and rotate clockwise, the button should pop up and make a slight clicking sound, at this time proceed to the next test.



- Verify chain is not twisted or askew by examining the individual chain link weld points. For proper operation the weld points must be in a parallel orientation as shown below (left). If the chain is reeved and twisted observe the illustration below (right) to remove twist in chain.
- Press the down button on the pendant and hold until the limit spring on the chain touches the limit switch plate, when the limit trips the hoist lifting motor should stop.
- Next press the up button on the pendant and hold until the chain is retracted fully upward, and the limit switch is tripped and lifting motor stops.

Lubrication of the chain will play an important part in the service lifetime of the hoist system. On the initial installation apply oil to the chain and evenly disperse with cloth. The best method is to extend the chain to the lowest point then start applying lubricant at the base of the hoist and working your way down the chain to hook. After application, run the chain fully up and fully down several times to insure even dispersion of oil on all moving parts.

11.0 Operation

After all the appropriate assembly and visual inspection has been completed it is now time to have the hoist system “Pre-Use inspected” by a qualified crane service provider and document any deficiencies that may be discovered and correct them. Once all commissioning and testing is complete the hoist can be placed into service.

It is recommended to have an operator certification process that includes training by a qualified agency and follow the safety tips in section 9.0 of this manual. Properly certified operators may help reduce potential risks in day-to-day use of the system and protect yourself or your employees from injury and property damage. Knowing proper operation of the hoist system will also maximize the service life of the system to your business and return on the investment you made in this Starke hoist.

12.0 Maintenance

12.1 General Maintenance

Your new Starke chain hoist requires very little maintenance, but there are some key items that should be done on a regular basis to prolong the longevity of the lifting device.

12.1.1 The most important and often overlooked item would be proper lubrication of the lift chain. Using the recommended oil **Lubriplate Rock Drill Oil 10R, #L0847-057** or equivalent.

- Wipe oil on with a brush and coat all of the chain starting at the top with no load on the hook and the chain fully extended.
- Wipe excess oil off the chain with a rag, leaving a thin film of oil on the chain.
- Run chain up to upper limit to lubricate the internal moving parts

12.1.2 Check the chain guide for wear at the point where the chain enters the housing. Excessive wear from side pulling will require replacing the chain guide. (Item 22, page 22)

12.2 Daily Pre-Use Inspection (No Load)

- Verify power is available and test the operation of the Estop function.
- b. Test upper and lower limit switch functionality on hoist and any other motions the system is capable of.
- As the motor is operating listen for any unusual sounds such as grinding or excessive humming, hammering, stuttering. If so, place the hoist out of service until properly inspected by qualified personnel.
- Check chain condition and look for any signs of excessive wear or foreign debris and that adequate lubrication is present. Correct as necessary.
- Inspect hook assembly for signs of damage or wear and that hook safety latch is in good condition.

▲IMPORTANT NOTE: Keep a daily log or checklist of these results and run times of the system per day. Good record keeping will help when planning for routine maintenance of the system and maximizing service life.

12.3 Monthly Inspection

12.3.1 Perform a thorough inspection of the chain. Look for excessive wear on chain links as well as distortion or stretching of the links. Measure internal and external length dimensions of the links. See table 6.1 for nominal dimensions and if the measured values exceed 5% of specifications the chain must be replaced.

12.3.2 Inspect the chain link diameter and if the measured value is 10% less than the specified diameter in (Table 12.3.2.1) the chain must be replaced.

Model	Diameter	Capacity	Internal Length	Internal Width	External Width
SSP-1026	6.3 mm	1/2 Ton	19mm	7.5mm	20.5mm
SSP-2022	8.0 mm	1 Ton	21mm	8.9mm	23mm
SSP-4011	8.0 mm	2 Ton	30mm	12.5mm	33mm

Table 12.3.2.1

12.3.3 Inspect hoist hook assembly checking for any cracks or distortion of the hook body and/or excessive wear. If the measured dimensions are 5% or more out of specification the hook assembly needs replaced. See figure 12.3.2.2 and table below.

12.3.3 Oil the chain as shown in section 12.1.1

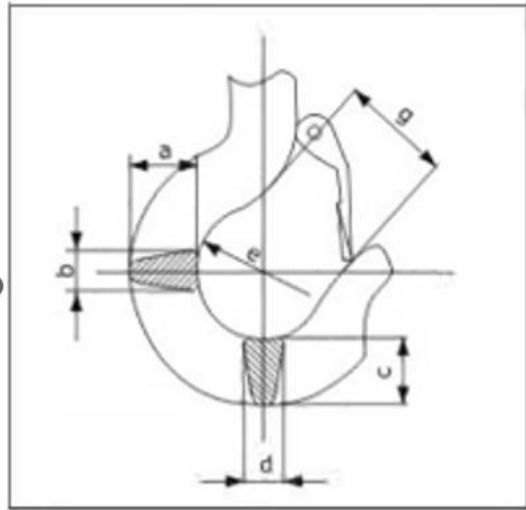


Figure 12.3.2.2

Hoist	A	C	G
SSP-1026	29mm	26mm	30mm
SSP-2022	34mm	29mm	36mm
SSP-4011	46mm	40mm	42mm

- Test the limit switch for proper operation and that it freely pivots and returns to its resting position. It is recommended to apply a thin layer of lubrication during this procedure. If the limit switch is not working correctly then it should be replaced by a qualified service facility.

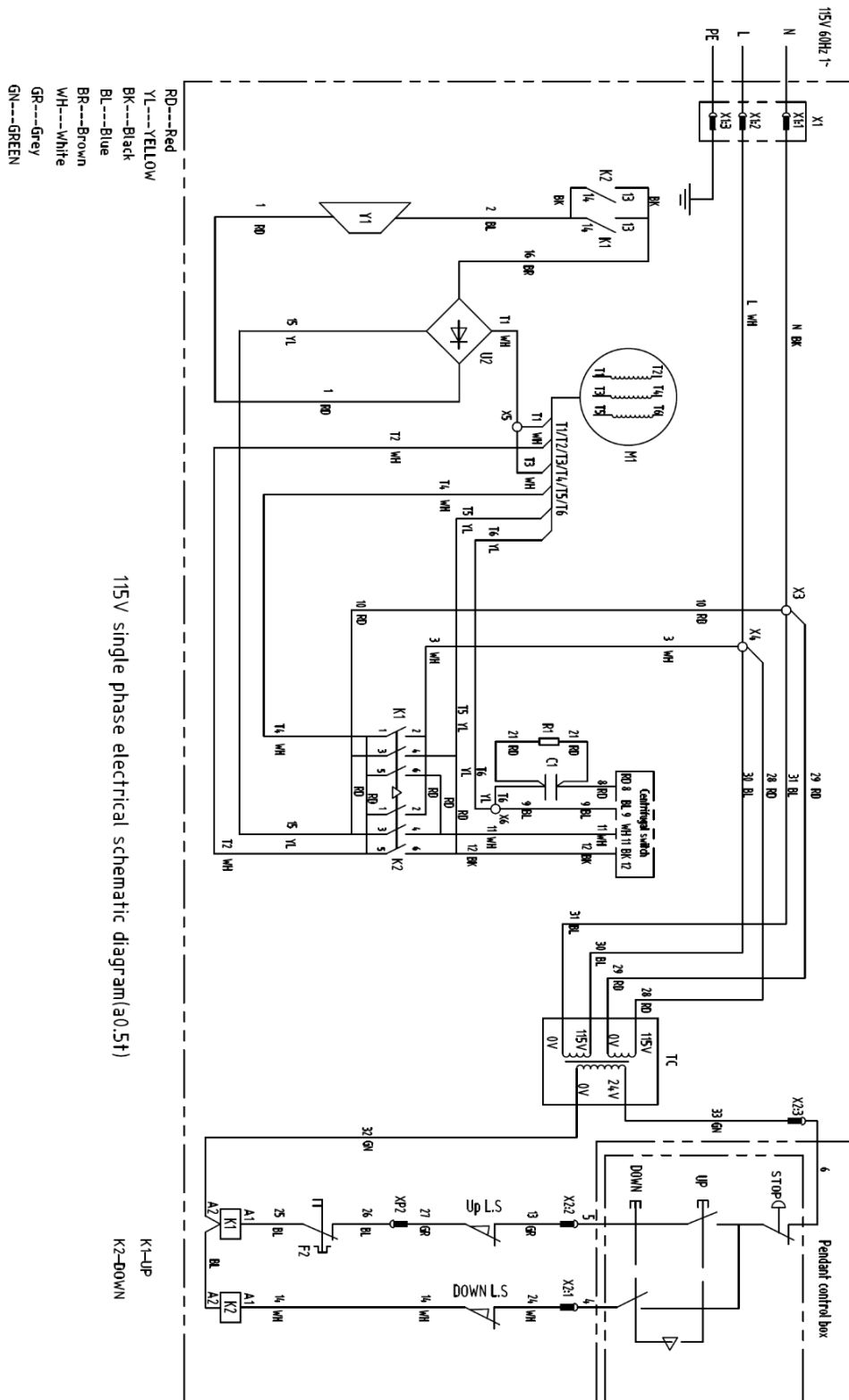
12.2.3 Annual Overhaul

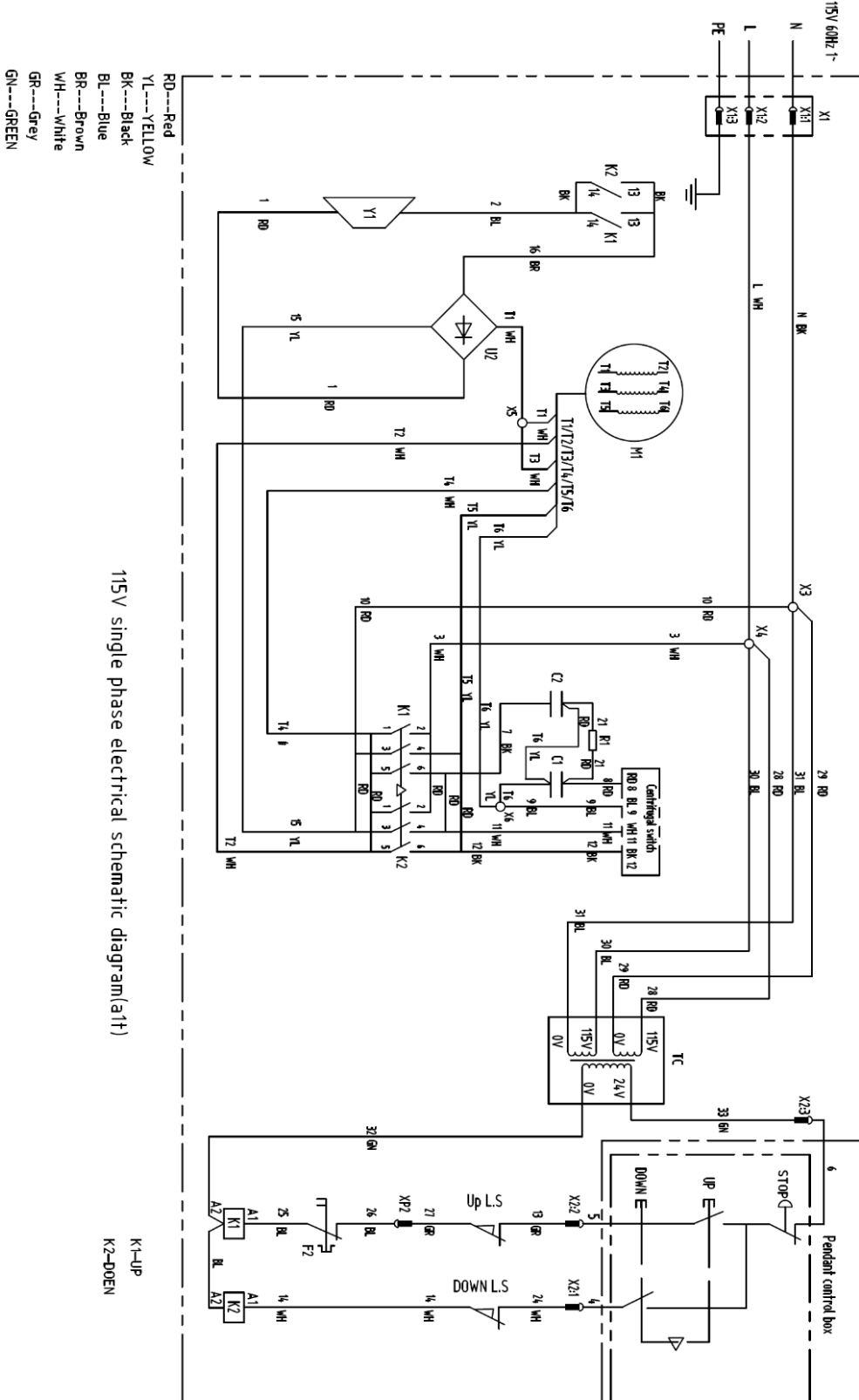
The overhaul of the hoist should be performed by a qualified service facility. For assistance in obtaining repair of the hoist please contact your dealer or Starke America.

- Inspect chain drive gear and guide roller casement for wear and replace if required.
- Change gear case lubricant and inspect old lubricant for signs of metallic debris that could indicate excessive component wear within the drive train.
- Upon completion of overhaul the hoist should be load tested and certified by a qualified service agency before being placed back into service.

13.0 Electrical Information

SSP-1026





13.1 Starke Single Speed 115V Hoist Motor Horsepower & Amp Information

Capacity	Horsepower	Amps
1000 LB	1.25	18
2000 LB	1.75	22
4000 LB	1.75	22

14.0 Parts Orders

The following pages show parts breakdowns for each capacity hoist and the various parts and components for that particular capacity. When ordering parts for your Starke hoist please provide:

1. The version number of this manual
2. Page number of the part breakdown drawing
3. Item number from the part breakdown
4. Description of the part
5. Qty of each part you need

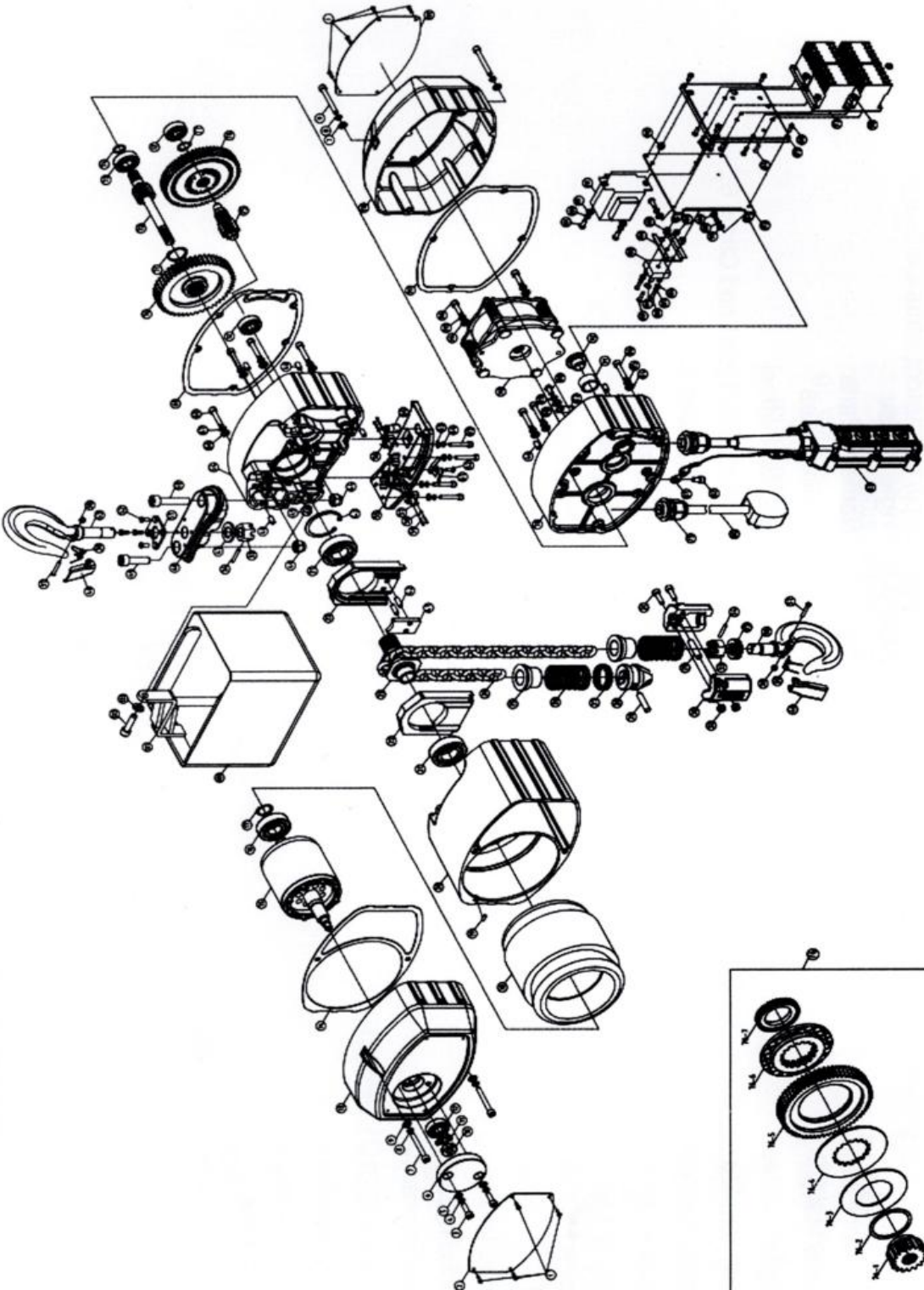
In the event there is no actual part number listed, the above information will help us get you the correct part for your hoist.

Contact a Starke products distributor for parts availability and pricing. Find your distributor at Starkeamerica.com.

Critical Spare parts are noted with an Asterisk beside the reference number in the parts list. This is the only place an Asterisk is used.

15.0 Part Lists and Exploded Drawings

15.1 Motor and Body Assembly Diagram



15.2 Motor and Body Assembly Part List

Reference #	Description				Quantity
Motor & Body Assembly Parts		1000 LB	2000 LB	4000 LB	
1	Cap Screw M3x6				8
2	Capacity Label				1
3	Screw M6x20				2
4	Spring Washers 6				2
5	Small Washers 6				2
6	Bearing Cap				1
7	Screw M6x50				4
8	Spring Washers 6				4
9	Small Washer 6				4
10	Round Nut M10				1
11	Lock Washer M10				1
12	Bearing 6201 20x47x14				3
13	Motor Housing Cover				1
14	Motor Housing Gasket				1
15	Motor – Rotor				1
16	Bearing 6204 12x32x10				1
17	Snap Ring 20				1
18	Stator				1
19	Pin M6x8				1
20	Motor Case				1
21	Bearing 6205 25x52x15				2
22*	Chain Guides				2
23*	Sprocket Wheel				1
24	T-Grade DT-Type Load Chain				1
25	Touch Blocks A				2
26	Limit Springs				2
27	Steel Cable Baffle Ring				1
28	Chain Stop				1
29	Pins				2
30	Lower Hook Block				2

15.2 Motor and Body Assembly Part List (Continued)

Motor & Body Assembly Parts		1000 LB	2000 LB	4000 LB	Qty
31	Screws M6x20				2
32	Hex Lock Nuts M6				2
33	Slotted Hex Nuts M16				2
34	Spring Pin M4x25				2
35*	Thrust Bearing	51103	51103	51103	1
36*	Lower Hook				1
37	Screw	M4x22	M4x22	M4x22	2
38	Hex Lock Nuts	M4	M4	M4	2
39	Dual Spring				2
40*	Safety Latch				2
41	Baffle				1
42	Pin	M6x18	M6x18	M6.18	2
43	Snap Ring				1
44	Screw	M10	M10	M10	2
45	Screw	M8	M8	M8	2
46	Pin	M6x12	M6x12	M6x12	6
47	Thrust Washer	17x30x2.75	17x30x2.75	17x30x2.75	1
48	Connecting Bar				1
49	Screw	M10x35	M10x35	M10x35	1
50	Screw	M10x50	M10x50	M10x50	1
51	Mount Plate				1
52	Screw	M5x10	M5x10	M5x10	1
53	Upper Hook				1
54	Gear Case				1
55	Limit Block				1
56	Limit Switch				2
57	Plain Washer				4
58	Spring Washer				4
59	Screw	M2x12	M2x12	M2x12	4
60	Seal Ring				1
61	Spring Plate				1

Motor & Body Assembly Parts		1000 LB	2000 LB	4000 LB	Qty
62	Screw	M4x10	M4x10	M4x10	1
63	Small Washer				4
64	Spring Washer				4
65	Screw	M5x25	M5x25	M5x25	1
66	Small Washer				4
67	Spring Washers				4
68	Screw	M6x30			4
69	Back Frame Gasket				1
70	Lift Gear				1
71	Snap Ring (shaft 25)				1
72	Pinion Gear				1
73	Bearing	6202	6202	6202	2
74	Snap Ring (shaft 15)				2
75	Middle Gear Shaft				1
76	Overload Limit Clutch				1
76-1	Spline Bushing				1
76-2	Adjusting Washer				1
76-3	Belleville Spring				1
76-4	Clutch Support				1
76-5	Idler Gear Shaft				1
76-6*	Clutch Friction Plate				1
76-7	Adjusting Nut				1
77	Snap Ring (shaft 16)				1
78	Brake Assembly				1
79	Cable Clamp	M20x1.5	M20x1.5	M20x1.5	1

16.0 Troubleshooting Guide

Conditions	Reasons	How to Solve
The hoist cannot be operated	<ol style="list-style-type: none"> 1. The power plug is not properly installed. 2. The power fuse is burned, or the no-fuse switch is off. 3. The fuse in the control circuit burnt. 4. The power cord or the wire of the control circuit is not linked properly. 5. The voltage is too low. 6. The motor makes a sound but does not rotate. 7. The emergency switch is pressed. 8. The hoist requires more amp flow. See 10.2 	<ol style="list-style-type: none"> 1. Verify Plug is installed properly 2. Check whether the current is normal, replace a proper fuse or restart the non-fuse switch. 3. Check whether the current is normal, and replace a proper fuse. 4. Repair or replace the electricity wire that breaks or has bad contact. 5. Measure whether the voltage is over 10% lower than the standard voltage. 6. Check whether the motor phase is correct-repair and make proper insulation. 7. Confirm the reason or pressing the emergency switch. 8. Make sure any extension cords or supply wires are 10 gauge or larger if circuit breaker is tripped.
The hoist cannot be stopped	The coil of the contactor fuses (it is in short circuit fault).	Replace the contactor.
The brake slides	The motor brake wears.	Replace the friction disc.
The chain/chain wheel of the lower hook makes abnormal noise.	<ol style="list-style-type: none"> 1. The chain is not lubricated enough and properly. 2. The chain wheel is worn. 	<ol style="list-style-type: none"> 1. Lubrication 2. Replace the chain and chain wheel
Electric Leakage	<ol style="list-style-type: none"> 1. Bad Ground. 2. There is dust in air vents or on electrical parts or the humidity is too high. 	<ol style="list-style-type: none"> 1. Provide good ground connection. 2. Keep electrical parts clean and make humidity low.

17.0 Derated Hoist Information

Occasionally a customer may prefer a hoist that has been derated to a lower capacity to provide a hoist mounting area with a reduced load. Starke hoist derate kits are available by posting a request on the starkeamerica.com website or contacting your Starke products dealer. This manual applies to products that may show lower capacities than those listed in this manual. Check your hoist id tags (not decals) to determine the type of hoist you have and whether this manual is correct for your unit.



Starke Products Warranty

1 Year (12 Month) Parts & Labor Warranty

Unless otherwise specified, Starke guarantees that our products are free from material defects in design and workmanship under normal use, proper maintenance, and service.

This warranty is strictly limited to 12 months for single shift operation or 2,000 hours after installation, or 14 months after shipment, whichever is shorter. Within ten days after defect is found, warrantee must deliver a written notice to Starke providing defect information. All requested warranty information must be received promptly by Starke in no more than 5 business days.

Customer is responsible for all shipping charges on returned/warrantable items. Starke will cover the repair (parts and labor) at no charge or provide a replacement item at Starke's discretion.

This warranty does not cover defects or damage caused by acts of God, unusual wear and tear, improper use, or improper maintenance by the user. No responsibility for consequential damage is expressed or implied, and the responsibility under this warranty/guaranty is limited to the repair or replacement of the defective materials. Repair or replacement of the item is fully at the discretion of Starke.

ALL OTHER REPRESENTATIONS, EXPRESS OR IMPLIED, WARRANTY, OR LIABILITY RELATING TO THE CONDITION OR USE OF THE PRODUCT ARE SPECIFICALLY DISAVOWED, AND IN NO EVENT SHALL STARKE BE LIABLE TO BUYER, OR ANY THIRD PARTY, FOR ANY DIRECT OR INDIRECT CONSEQUENTIAL OR INCIDENTAL DAMAGES

STARKE

Starkeamerica.com/contact-us/



Contact Your Starke Representative for More Information on Products to Help Maximize Your Workplace Efficiency



Hoists & Trolleys

Crane Components



Electrification

Crane Kits



Slings



Safety